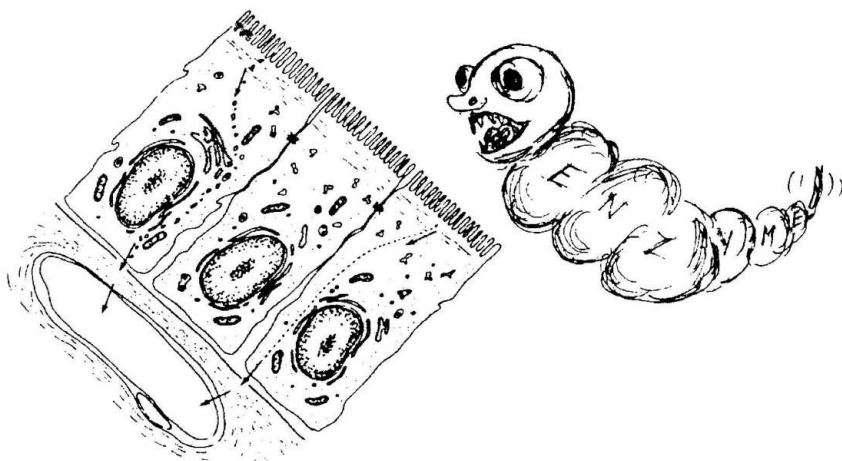


# PROGRAMME



## PROGRESS IN CELL AND TISSUE BIOLOGY

(PHYSIOLOGICAL, EXPERIMENTAL AND PATHOLOGICAL ASPECTS)

Dedicated to the 75<sup>th</sup> Birthday

of

**Prof. MUDr. Zdeněk LOJDA, DrSc.**



January 30 – 31, 2003  
FIRST FACULTY OF MEDICINE,  
CHARLES UNIVERSITY  
PRAGUE  
CZECH REPUBLIC

**Thursday, January 30, 2003**

**11.00**

- Opening ceremony: doc. MUDr. P. Hach, CSc.
- Greeting addresses: Prof. ing. I Wilhelm, CSc., rector of the Charles Univ.  
Prof. MUDr. Š. Svačina, DrSc., dean of the 1<sup>th</sup> Med. Fac.
- Laudatio: Prof. MUDr. J. Slezák, DrSc., vice chairman of the SAS
- Personal greetings: Prof. Dr. M. van der Ploeg, Leiden  
Prof. Dr. H. Lippa, Leipzig  
Prof. RNDr. P. Dubový, DrSc., chairman of the Czech  
Society of Histochem. Cytochem.  
Prof. MUDr. S Čech, DrSc., vice dean of the Med. Fac.  
Brno  
Prof. MUDr. V. Lichnovský, DrSc., Med. Fac. Olomouc  
Prof. RNDr. I. Raška, DrSc., Lab. of Gen Expr.

**12.30 Lunch break**

**13.30** Scientific programme of Symposium  
„PROGRESS IN CELL AND TISSUE BIOLOGY“

*Chairman: Prof. MUDr. K. Smetana, DrSc.*

**CHANGES OF CAPILLARY DENSITY DURING LONG-TERM  
HIGH ALTITUDE EXPOSURE (LTHAE) AT 3.800 M. *A tribute to  
Professor Lojda for his contribution to the molecular and functional  
heterogeneity of the capillary bed***

**Gossrau R.<sup>1</sup>, Gunga H. Ch.<sup>2</sup>, Richter H.<sup>1</sup>, Planitzer G.<sup>1</sup>, Gutschmann M.<sup>1</sup>**

*<sup>1</sup>Department of Anatomy 11, Free University of Berlin*

**CONTRIBUTION OF CZECH AUTHORS TO PLANT  
HISTOCHEMISTRY**

**Beneš K.**

*Faculty of Biology, University of South Bohemia*

**HISTOCHEMISTRY AND IMMUNOHISTOCHEMISTRY -  
POWERFUL METHODS FOR STUDIES OF CELLULAR AND  
MOLECULAR PROCESSES DURING DEGENERATION AND  
REGENERATION OF THE NERVOUS SYSTEM**

**Dubový P.**

*Department of Anatomy, Division of Neuroanatomy, Faculty of Medicine,  
Masaryk University, Brno*

**PLASTICITY OF NEURAL STEM CELLS**

**Mokrý J., Karbanová J., Duspivová D.**

*Department of Histology and Embryology, Charles University Medical Faculty, Hradec Králové*

**MORPHO- AND CHEMOARCHITECTONICS OF THE REACTIVE ATROCYTES IN CULTURE AND IN SITU**

**Mareš V.<sup>1</sup>, Lisá V.<sup>1</sup>, Malík R.<sup>1</sup>, Kozáková H.<sup>2</sup>, Krajčí D.<sup>3</sup> Šedo A.<sup>1</sup>, Dbalý V.<sup>4</sup>, Tovaryš F.<sup>4</sup>, Marek J.<sup>4</sup>**

*<sup>1</sup>Joint Laboratory of the Institute of Physiology of the Academy of Sciences, Prague*

**DIPEPTIDYL PEPTIDASE IV ACTIVITY AND/OR STRUCTURE HOMOLOGUES (DASH) IN TRANSFORMED NEUROECTODERMAL CELL GROWTH**

**Malík R., Mareš V., Ševčík J., Kleibl Z., Šedo A.,**

*Joint Laboratory of Cancer Cell Biology of the 1<sup>st</sup> Faculty of Medicine of Charles University and Institute of Physiology, Academy of Sciences, Prague*

**AN INCREASE OF CD26/DIPEPTIDYL PEPTIDASE IV IN THYMOCYTE SUBSETS OF INFANT MALE RATS AFTER HYDROCORTISONE AND ITS SUPPRESSION BY ANTIGESTAGENS-ANTIGLUCOCORTICIDS**

**Kraml J.<sup>1</sup>, Kolínská J.<sup>3</sup>, Šinkora J.<sup>4</sup>, Zákostecká M.<sup>3</sup>, Kadlecová L.<sup>1</sup>, Hiršová D.<sup>1</sup>, Nosková L.<sup>2</sup>**

*Institute of Medical Biochemistry, First Faculty of Medicine, Prague*

**EXPRESSION OF NO-SYNTASES AND CYTOKINES IN NORMAL, HYPERPLASTIC AND ADENOMATOUS HUMAN PARATHYROID GLAND**

**Kučera T.<sup>1</sup>, Astl J.<sup>2</sup>, Veselý D.<sup>2</sup>, Martínek J.<sup>1</sup>**

*Inst. of Histology and Embryology, First Faculty of Medicine, Charles University, Prague*

**PLURIHORMONÁLNÍ FENOMÉN PITUITÁRNÍCH ADENOMŮ**

**Němeček S.<sup>1</sup>, Cerman J.<sup>2</sup>**

*Neuropatologická a Biochemická laboratoř Neurologické kliniky LF UK, Hradec Králové*

**SCIENTIFIC DIGITAL PHOTOGRAPHY IN HISTOCHEMICAL LABORATORY**

**Weyda F.**

*Laboratory of Digital Imaging in Entomology, Institute of Entomology, Czech Academy of Sciences, České Budějovice*

Friday, January 31, 2003

9.00 *Chairman doc. MUDr. P. Hach, CSc.*

**MERKEL CELLS ARE POSTMITOTIC CELLS OF NEURAL CREST ORIGIN**

**Grim M.<sup>1</sup>, Szeder V.<sup>1,3</sup>, Halata Z.<sup>2</sup>, Sieber-Blum M.<sup>3</sup>**

*<sup>1</sup>Institute of Anatomy, Charles University Prague, Czech Republic, <sup>2</sup>Medical College of Wisconsin, Milwaukee, U.S.A., <sup>3</sup>University of Hamburg, Germany*

**CHANGES IN THE EXPRESSION OF SELECTED STRUCTURAL AND FUNCTIONAL PROTEINS IN THE CHICK EMBRYONIC KIDNEY PROVIDE A CLUE TO THE IDENTIFICATION OF ITS DEVELOPMENTAL STAGES**

**Zemanová Z., Jirsová Z.<sup>1</sup>**

*Institute of Physiology, Academy of Sciences of the Czech Republic, <sup>1</sup>Institute of Histology and Embryology, First Faculty of Medicine, Charles University, Prague*

**ANTIBODIES IN AUTOIMMUNE HEPATITIS**

**Storch W.B.**

*Weinheim, Inst. of Immunology, University Heidelberg, Germany*

**DOUBLE/TRIPLE LABELING FOR STUDY OF GLYCOBIOLOGICAL PROPERTIES OF CELLS AND TISSUES**

**Smetana K., Jr.**

*Charles University, 1st Faculty of Medicine, Institute of Anatomy, Prague*

**IMUNOHISTOCHEMICKÁ IDENTIFIKÁCIA CHONDROITÍNSULFÁTOV A, B A C V ĽUDSKEJ SLEZINE**

**Jakubovský J., Porubský J., Martanovič P., Polák Š., Jakubovská V., Ružičková M., Surmiková E., Danihel I.**

*Univerzita Komenského, Lekárska Fakulta, Ústav Patologickej anatómie, Ústav histológie a embryológie a Detská fakultná nemocnica, Bratislava, Slovenská republika*

**COLONIZATION WITH NON-PATHOGENIC *E. COLI* STRAINS AFFECTS THE LEVELS OF INTESTINAL BRUSH-BORDER ENZYMES IN GNOTOBIOTIC PIGLETS**

**Kolínská J.<sup>1</sup>, Kozáková H.<sup>2</sup>, Lojda Z.<sup>3</sup>**

*<sup>1</sup>Institute of Physiology and <sup>2</sup>Institute of Microbiology, Academy of Sciences of the Czech Republic, <sup>3</sup>1<sup>st</sup> Faculty of Medicine, Charles University, Prague*

## **COLLAGEN TYPE IV AND EPITHELIAL TUMOURS OF THE COLON**

**Galbavý Š., Porubský J., Polák Š., Uhnava I., Kollárová E., Jakubovský J.**

*Comenius University, School of Medicine, Department of Pathology, Department of Histology and Embryology, Bratislava, Slovak Republic*

## **NUCLEOLI OF RINGED SIDEROBLASTS (RSS) IN REFRACTORY ANEMIAS (RAS) OF THE MYELODYSPLASTIC SYNDROME (MDS)**

**Smetana K., Jirásková I., Malásková V., Čermák J.**

*Institute of Hematology and Blood Transfusion, Prague*

## **CYTOCHEMISTRY IN DIAGNOSIS OF NEAR-TETRAPLOID ACUTE LEUKEMIAS**

**Lemež P.**

*Dept. of Radiotherapy, Hospital Jihlava, Czech Republic*

## **CHANGES OF CONNEXIN-43 AND A-SARCOMERIC ACTIN IN CULTURED CARDIOMYOCYTES DUE TO EXPOSURE TO THYROID HORMONE.**

**Tribulová N., Shneyvays V.<sup>1</sup>, Mamedová I.<sup>1</sup>, Shainberg A.<sup>1</sup>, Manoach M.<sup>2</sup>**

*Institute for Heart Research, SAS, Bratislava, Slovakia, <sup>1</sup>Fac. Life Sciences, Bar Ilan University, Ramat Gan and <sup>2</sup>Dept. Physiology, Tel Aviv University, Tel Aviv*

## **CONTRIBUTION OF IMMUNOHISTOCHEMISTRY IN FORENSIC DIAGNOSTICS OF SUDDEN INFANT DEATH (SIDS)**

**Bouška I., Klír P.:**

*Charles University, 2<sup>nd</sup> Medical faculty, Institute of Forensic Medicine, Institute for Postgraduate Medical Education, Dept. of Forensic Medicine, Czech Rep.*

## **DIFFICULTIES IN SAMPLING TECHNIQUE AND INTERPRETATION OF ENDOMETRIAL CYTOLOGY**

**Tóth D., Kužel D., Kobilková J., Lojda Z.**

*1st. Medical Faculty of the Charles University, Prague, Czech Republic  
Department of endoscopy, Laboratory of cytology and histochemistry.*